

Nelle + Olson | Portal Way Property | Maps

Parcel #3902082501530000

Parcel# 3902081861860000



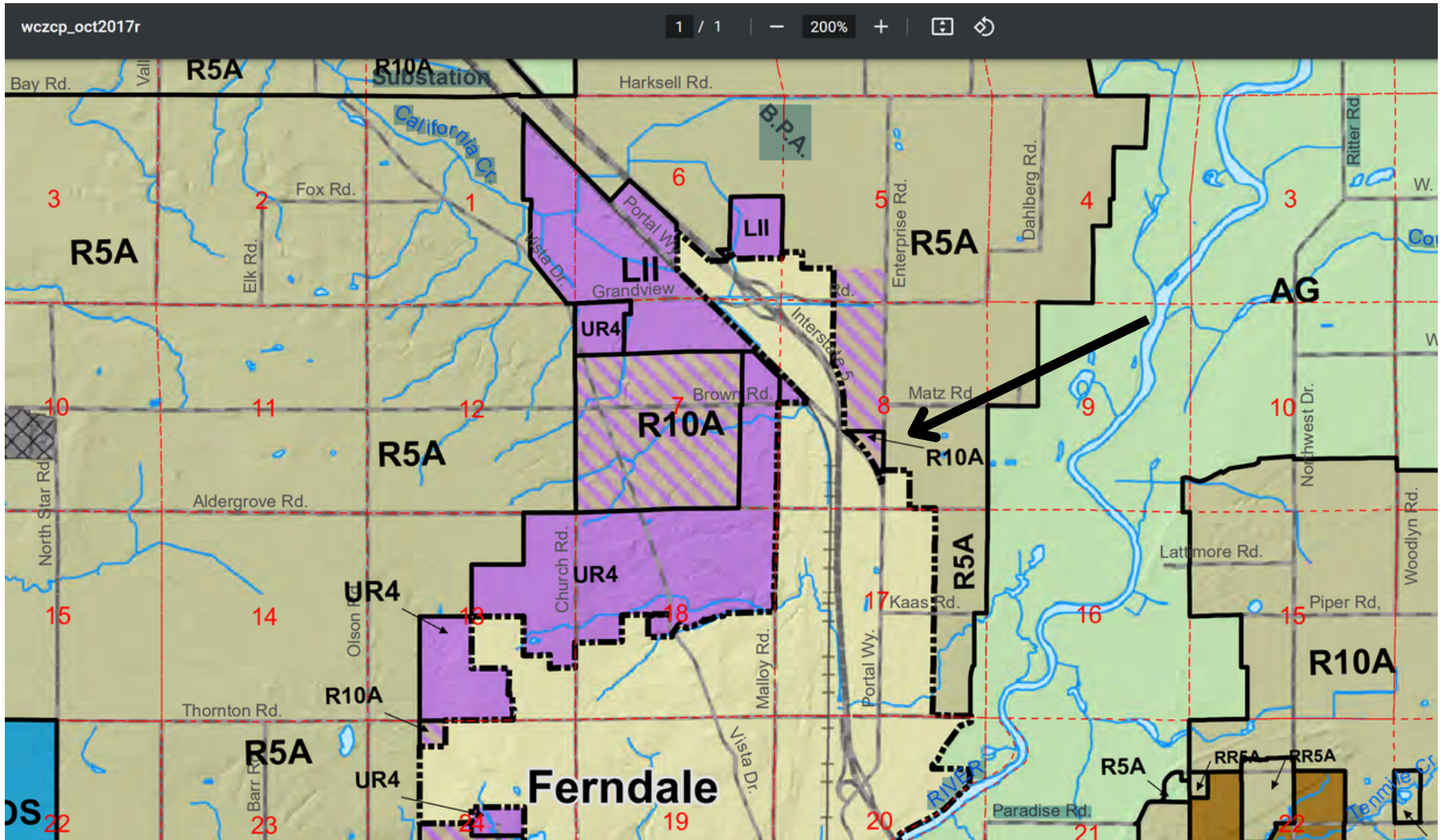
NW LIVING GROUP
REALTORS® / 360-646-8100

BROKERED BY
exp
REALTY

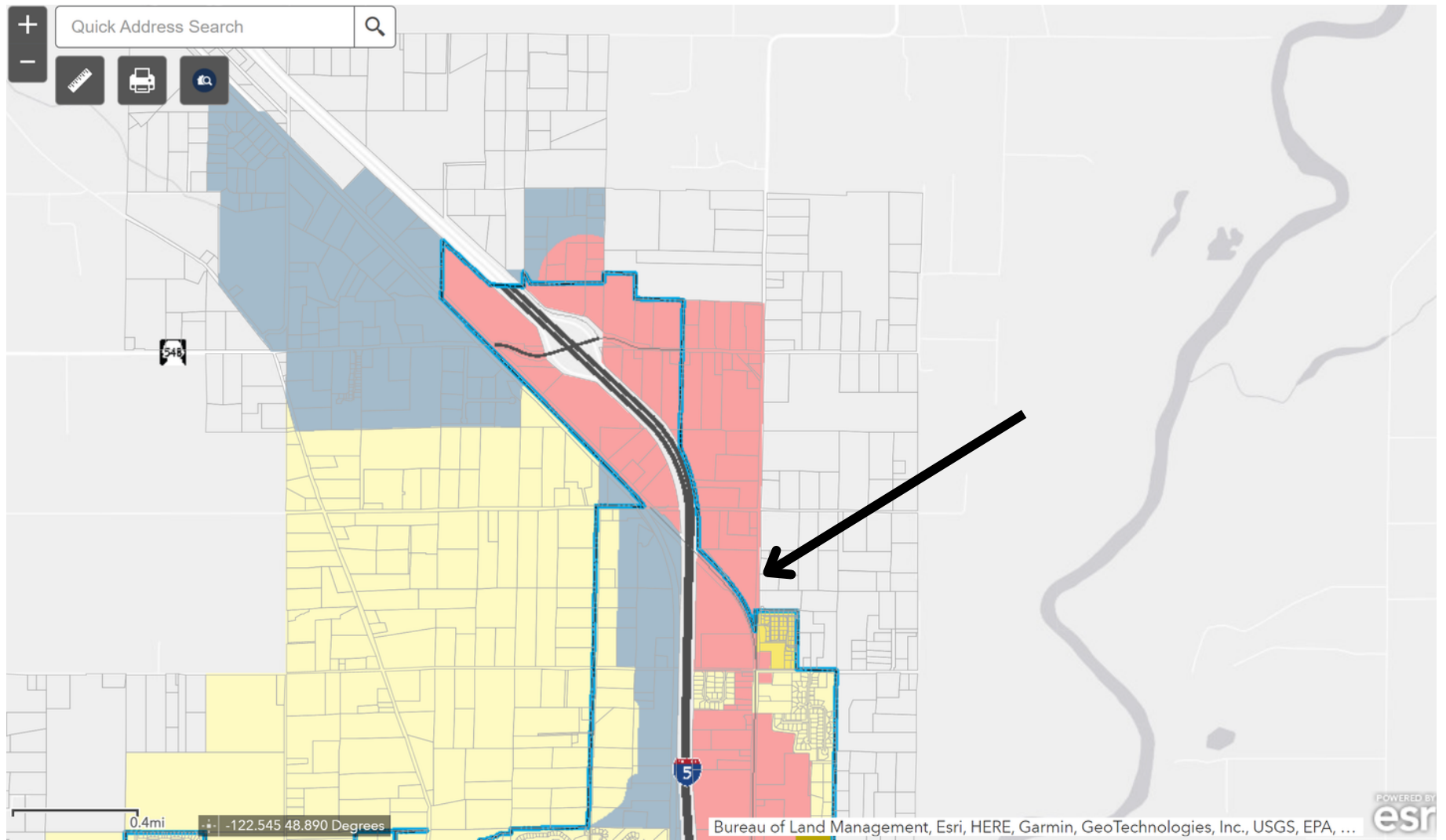
homes@nwlivingre.com
WWW.NWLIVINGRE.COM

EQUAL HOUSING OPPORTUNITY

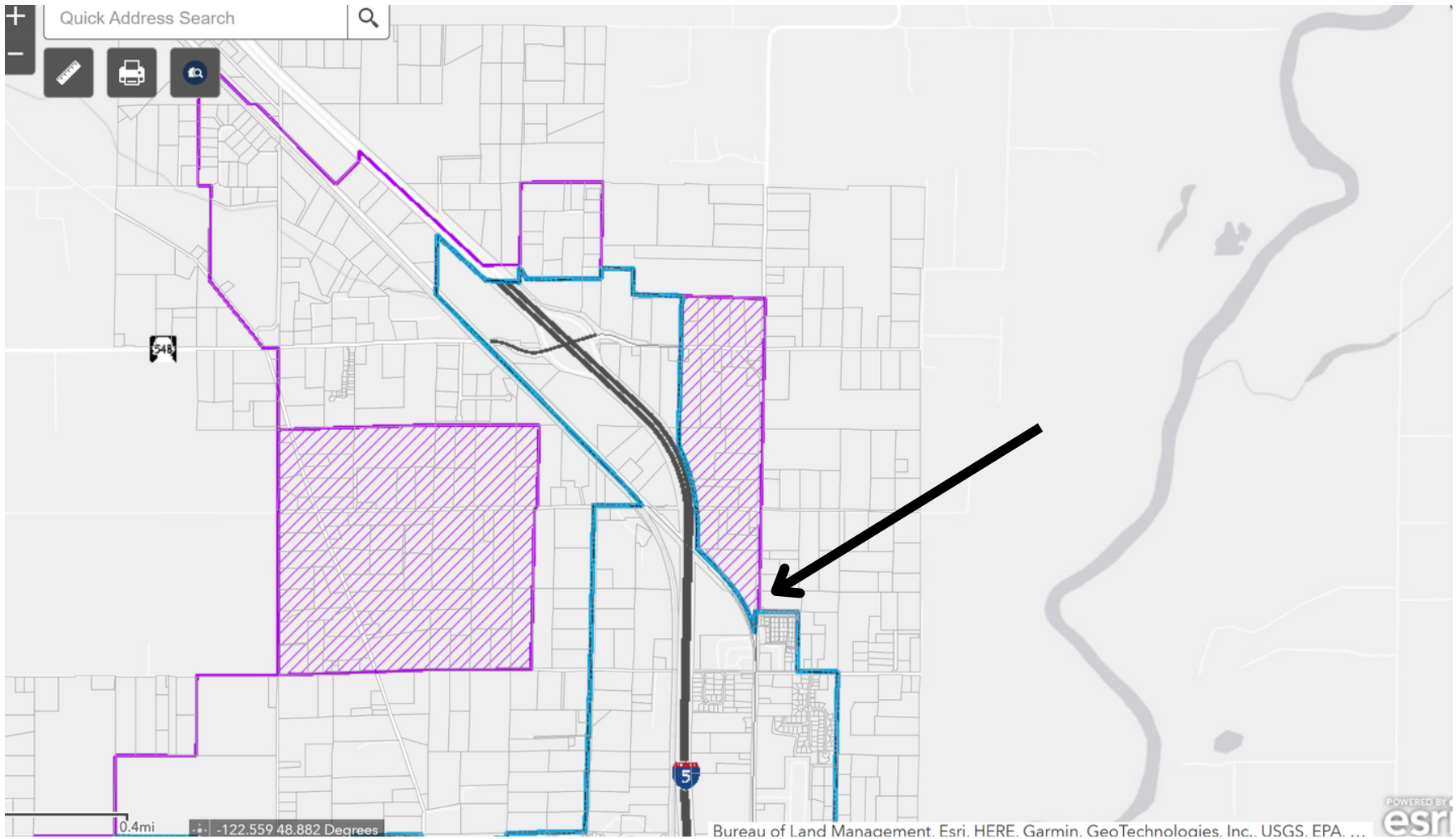
Prepared for Rozanne Olson by
Mimi Osterdahl and John Eggers



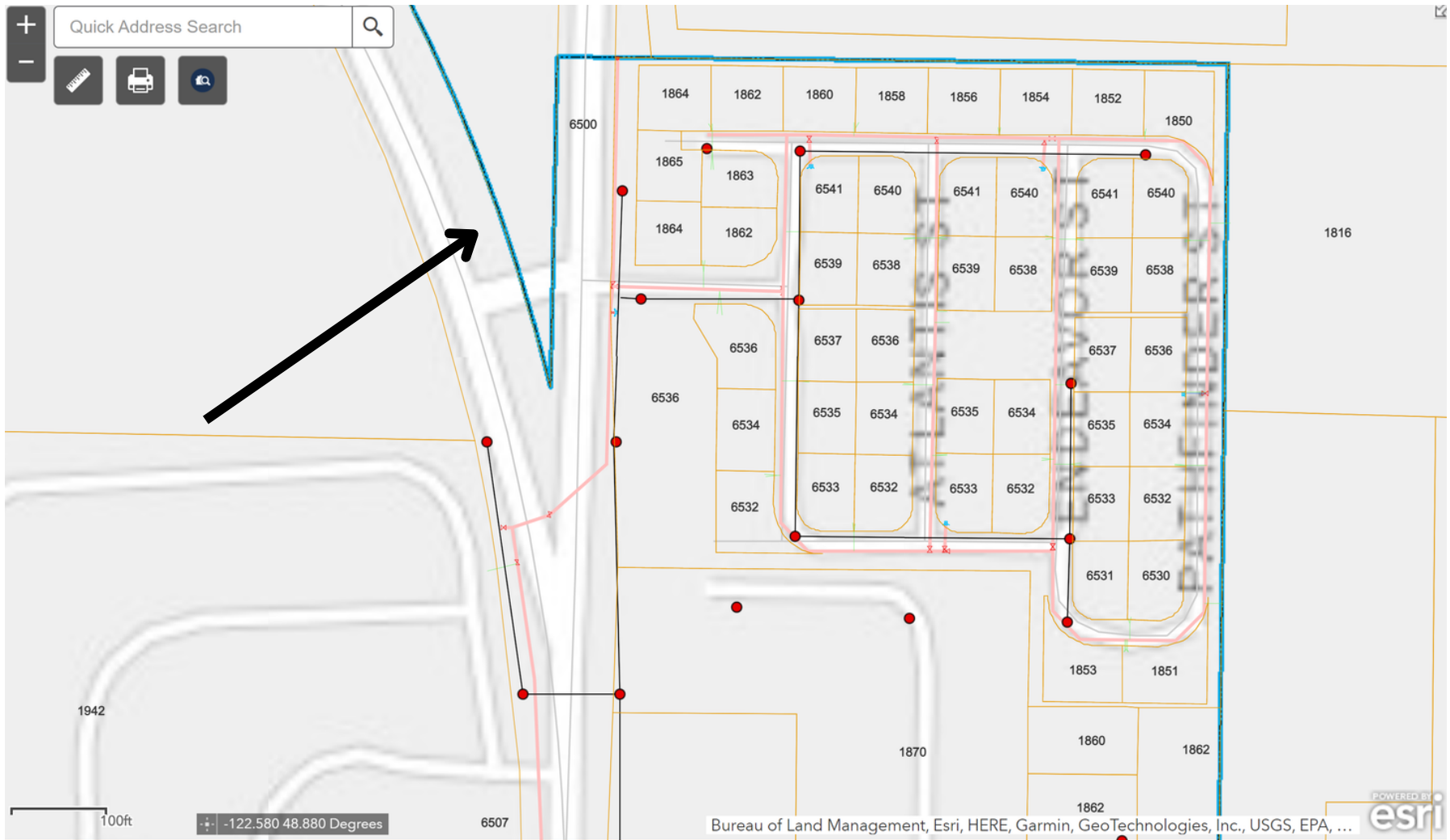
Zoning Outside City Boundary



Zoning - Pink - Commercial



Urban Growth Reserve



Existing Water & Sewer Utilities



Water is light pink line
Sewer is dark line with red dots

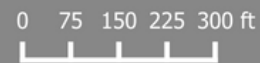


Image Southern Corner

City Right of Way Shown



-  Review Area
-  Potential Wetlands



Aerial Photo: Whatcom County 2019



Wetland Reconnaissance Map

Parcels 390208 250153 & 390208 186188
 Portal Way and Enterprise Road

Sept 2021



NW LIVING GROUP
REALTORS® / 360-646-8100



BROKERED BY **exp** REALTY
homes@nwlivingre.com
WWW.NWLIVINGRE.COM



EQUAL HOUSING OPPORTUNITY

Mimi Osterdahl-Eggers

2019 WCAR Realtor® of the Year
Realtor® of the Year Finalist WA Realtors 2020
Whatcom County Association of Realtors® -
Board of Directors/Past President
Managing Broker, CRS, MCNE, GRI, ABR, AHWD,
GREEN, C2EX Endorsed
Founder - NW Living - brokered by eXp Realty
co-founder/Global eXpansion - eXpand Success
Global Partners
Mobile: 360-220-6787 / mimi@nwlivingre.com /
www.nwlivingre.com

John Eggers

Broker | eXp Realty | C2EX Endorsed | REALTOR®
Whatcom County Association of Realtors
NW Living Group - brokered by eXp Realty
Co-Founder Expand Success Global Partners
Insight President Club Winner 2015, 2016
Mobile: 206-227-1724-6787
john@nwlivingre.com
homes@nwlivingre.com
www.nwlivingre.com