

# LIVING BY THE NOOKSACK

*A Quarterly Newsletter from the City of Ferndale*



## Fall 2024

While many community members follow City activity on social media and the City website, not everyone has the time or resources to do so.

This quarterly newsletter is one of the efforts of the City to inform residents and help the community understand what is going on in the city.

### Inside this newsletter, read about:

- Time to Clear Those Storm Drains
- Only Rain Down the Drain
- City of Ferndale Flood Preparedness
- Flood Safety Tips
- Ferndale Feature: Ferndale Kiwanis Club Flag Program
- Whatcom Ready
- Coffee With a Cop
- Comprehensive Plan - What is HB 1220?
- Grandview Economic Opportunity Study Open House

For questions or comments about this newsletter, contact Communications & Community Relations Officer Megan Juenemann at (360) 685-2353 or [meganjuenemann@cityofferndale.org](mailto:meganjuenemann@cityofferndale.org)

This newsletter is accessible online at [www.cityofferndale.org/newsletter](http://www.cityofferndale.org/newsletter)



[www.facebook.com/cityofferndale](https://www.facebook.com/cityofferndale)



[@ferndalewaofficial](https://www.instagram.com/ferndalewaofficial)

## TIME TO CLEAR THOSE STORM DRAINS

Are you ready for the rain? Help prevent pollution and flooding by thinking ahead!

- Make sure catch basins are clear of leaves and other debris.
- Regularly inspect and maintain storm ponds and facilities.
- Pick-up and properly dispose pet waste and debris that can pollute stormwater runoff.
- Be flood ready. Visit the City's website for more information on flood preparedness.

Many stormwater ponds in Ferndale are privately owned and are required to be inspected and maintained by Homeowners Associations. Failure to maintain the stormwater facilities may result in violations, flooding, and property damage.



## ONLY RAIN DOWN THE DRAIN

Most stormwater is not treated before it is discharged into waterbodies in Ferndale. Local waters then drain into larger waterbodies, including the Nooksack River to Bellingham Bay, the Lummi River to Lummi Bay, and California Creek to Drayton Harbor.

Beyond that, it is much cheaper to prevent pollutants from getting into the water than to pay for the clean up. Please help prevent pollution from entering the stormwater system and our local waters. Only rain and snowmelt down the drain.

For more information, please contact the City of Ferndale's Stormwater Department at [stormwater@cityofferndale.org](mailto:stormwater@cityofferndale.org) or call (360) 685-2357.



# CITY OF FERNDALE FLOOD PREPAREDNESS

In early October, City of Ferndale staff held a training on flood preparedness and staff were able to practice using the City's new sandbag machine. The City was able to acquire a new sandbag machine, a variable message board, and an emergency response trailer with supplies to set up a staging area in the event of an emergency. These purchases were facilitated with the support of Whatcom County Division of Emergency Management with funding provided by the Department of Commerce via an Emergency Rapid Response grant.

The new sandbag machine can fill 900 bags in just one hour!

Sand and sandbags will be made available to the public for use on private property upon "Emergency" declaration by the County. In an Emergency, the public sandbag station will be set up behind City Hall located at 2095 Main Street. Please bring your own shovel.



In "non-emergency" situations, sand and sandbags for private property can be purchased at hardware or home improvement stores.

**Volunteers:** If you would like to volunteer to fill sandbags during a flood, please call City Hall at (360) 384-4302 to be directed. Volunteers must be over the age of 16 and must check in and out with City staff.

## FLOOD SAFETY TIPS

As the flood waters rise this fall, remember to keep your family safe. Here are some tips to safely navigate our wettest season.

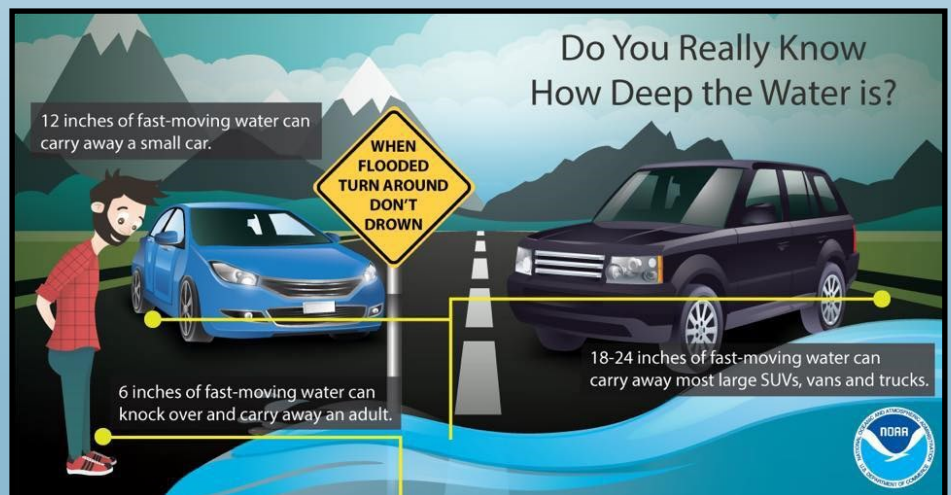
**Turn Around, Don't Drown.** It only takes twelve inches of flowing water to carry a car and even a little bit of water over the road can carry dangerous debris. Please abide by road-closed signs. Roads are closed for public safety. If there is water on the roadway, do not drive through.

**Get the Latest Updates.** When the rain starts falling, you can check the river level via the NOAA River Gauge.

**Make a Plan, Build a Kit.** Talk to your family members before the rainy season so you know what to do before, during, and after a flood. Plan an evacuation spot and make sure you know how to get in touch with each other. Build a kit that includes food, water, and other supplies to last at least 72 hours. Make sure your vital documents and first aid kit are in a water-proof container.

For more information on flood preparedness, including NOAA's River Gauge, please visit:

[www.cityofferndale.org/public-works-department/flood-preparation/](http://www.cityofferndale.org/public-works-department/flood-preparation/)



## WHATCOM READY—EMERGENCY PREPAREDNESS

**WHATCOM  
READY**

WhatcomReady.org is the County's site for emergency preparedness and response information. You can sign up for emergency notifications, discover resources you can trust, learn what to include in an emergency kit, find opportunities for volunteering, and more. Visit [www.whatcomready.org](http://www.whatcomready.org) or [www.facebook.com/WhatcomReady](https://www.facebook.com/WhatcomReady) for more information.



# FERNDALE FEATURE:

## FERNDALE KIWANIS CLUB FLAG PROGRAM

Rain or shine, dedicated Ferndale Kiwanians, with the support of Whatcom County Fire District 7, place over 150 American flags on Main Street and Portal Way on nine federal holidays. Kiwanis is a non-religious, non-political volunteer service organization and only posts American and Prisoner of War flags as a part of their flag program.

The City of Ferndale supported the Kiwanis Club with this service project by drilling holes in the sidewalks for flags to be placed. The Ferndale Kiwanis Club would like to extend a special thank you to Bob Dodge of Samuel's Furniture who supports the extension of the program along Main Street; Bob purchased and stores a dozen flags and places them the same days Kiwanis does. This program is also supported by Scout Troop 4026 for helping place the flags, and to RAM Construction and WCFD7 for helping with flag storage.

Ferndale Kiwanis is always looking for volunteers; if you'd like to support this program, the next opportunity will be Veterans Day on November 11th.

You can contact the Ferndale Kiwanis Club via Facebook Messenger (search @Ferndale Kiwanis Club)

Did you know that Ferndale Kiwanis honor individual veterans with their own personalized flags? This has been a very special program to acknowledge the local veterans in our community. Contact the club via Facebook for applications.



## COFFEE WITH A COP

On October 2, the Ferndale Police Department celebrated National Coffee with a Cop Day with the Ferndale Community at Woods Coffee. The mission of Coffee with a Cop is to provide the community with opportunities to ask questions, voice concerns, and get to know the officers in your neighborhood in a friendly and inviting location.

The Ferndale Police Department is grateful for the opportunity to increase officer-resident engagement and trust by building relationships, one cup of coffee at a time. Thank you to everyone who attended, and a special thank you to Woods Coffee for generously donating the space and coffee for attendees. **#StrongerCommunityTogether**



# COMPREHENSIVE PLAN - WHAT IS HOUSE BILL 1220?

Washington House Bill 1220 updates our State's housing goals to ensure that local governments plan for and accommodate housing for people of all income levels. This means that instead of just encouraging the availability of affordable housing, we are now required to actively plan for and ensure that housing, which is affordable to all segments of our population, can be built.

**Planning for All Income Levels.** HB 1220 requires us to plan for housing that includes all income levels. This includes providing permanent supportive housing and shelters for people experiencing homelessness. The City must also make provisions for various housing types.

**Addressing Racial Disparities.** HB 1220 mandates that the City identifies and addresses any racially disparate impacts, displacement, and exclusion in our housing policies. This means examining our zoning laws and other policies to ensure they do not inadvertently cause racial segregation or displacement.

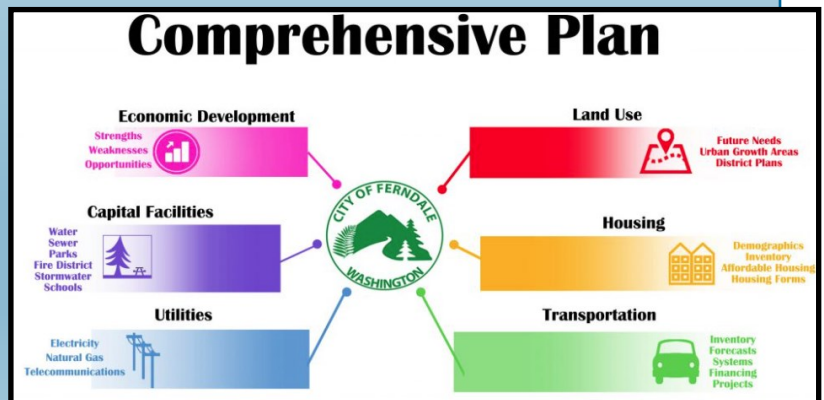
**Creating New Definitions.** Finally, HB 1220 introduces new definitions for terms like emergency housing, emergency shelters, and permanent supportive housing. Understanding these definitions helps us plan better and allocate resources for those in need.

The implementation of HB 1220 is ongoing. The Washington State Department of Commerce is developing methodologies for assessing housing needs which will help us better understand how many housing units we need to plan for at different income levels. Our goal is to ensure that Ferndale remains a welcoming, inclusive community that provides housing for everyone.

Updating the City's comprehensive plan to include provisions for housing that caters to all income levels means more diverse housing options will become available in the future. Focusing on policies that prevent displacement ensures that current residents can continue to live and thrive in our community, even as new housing developments are built. The City will keep the public informed as we continue to implement HB 1220 into the comprehensive plan and development code.

For questions or more information, please contact

Community Development Director Michael Cerbone at [michaelcerbone@cityofferndale.org](mailto:michaelcerbone@cityofferndale.org) or (360) 685-2367.



## GRANDVIEW ECONOMIC OPPORTUNITY STUDY OPEN HOUSE

The City of Ferndale, in partnership with the Port of Bellingham, is conducting a study to assess the economic benefits to utility ratepayers for funding utility improvements in the Grandview Area. The goal of the City of Ferndale and the Port of Bellingham is to encourage development that will bring the greatest economic benefits to Ferndale and Whatcom County. The study will inform the City and County's long-range vision for the area and decisions about when and where to expand utilities. Utility infrastructure is generally supported by new development in Washington state. In this case, the city as the utility owner, could fund an expansion if it is in the best interest of utility ratepayers, which would be reimbursed through connection fees and other means. If this study demonstrates economic benefits, such as business development and job growth, grants and other funding may be available.

State law dictates how cities manage growth. Ferndale is expected to grow by approximately 11,000 people and add nearly 3,500 jobs between 2025 and 2045. The Grandview Study Area is in Ferndale's urban growth area (UGA). Over the last ten years, the City has managed growth through infill development. Eventually, future growth will lead the City to annex more of its urban growth areas, including the parts of the Grandview Study Area that are currently outside of the city limits.

The City of Ferndale and Port of Bellingham will be cohosting an Open House to discuss this study and to answer any questions, on Tuesday, November 12, 2024 from 4:00 p.m. - 6:00 p.m. at Pioneer Pavilion Community Center (2007 Cherry Street, Ferndale). For more information, please contact Communications Officer Megan Juenemann at [meganjuenemann@cityofferndale.org](mailto:meganjuenemann@cityofferndale.org).